

**Area of New Road** (Including Pathway)

(2-3-50-5b-6-7-8-9-10-11-12-13-14-15-16-17-18a-18b-18c-19a-19c-19b-20a-20b-21-22-23-24-25-26-27-28-141-62-117-123-29-30-2)	5959 m <sup>2</sup>
(40-41-152-43a-43b-44-45a-45b-40)	876 m <sup>2</sup>
(58a-58-58b-58a)	2 m <sup>2</sup>
(164-54-165-166-167-164)	4 m <sup>2</sup>
(172-173-174-172)	4 m <sup>2</sup>
(168-169-170-171-168)	4 m <sup>2</sup>
(32a-32b-32c-32e-32a)	9 m <sup>2</sup>
(154-153-156-155)	273 m <sup>2</sup>
<b>Total</b>	<b>7131 m<sup>2</sup></b>

See sheet 13 for Reference and permanent Marks Table.

32	RP893359
	15181409
	15211357

Insite Planning and Surveying Pty Ltd ACN 659 819 351 (trading as InsiteSJC) hereby certify that the land comprised in this plan was surveyed by the corporation, by Joseph Simon SORBELLO, registered surveyor, for whose work the corporation accepts responsibility, under the supervision of Andrew John JENSEN, cadastral surveyor, and that the plan is accurate, that the said survey was performed in accordance with the Survey and Mapping Infrastructure Act 2003 and Surveyors Act 2003 and associated Regulations and Standards and that the said survey was completed on 14/09/2023.

*[Signature]*  
Cadastral Surveyor/Delegate

Date 19/09/2023

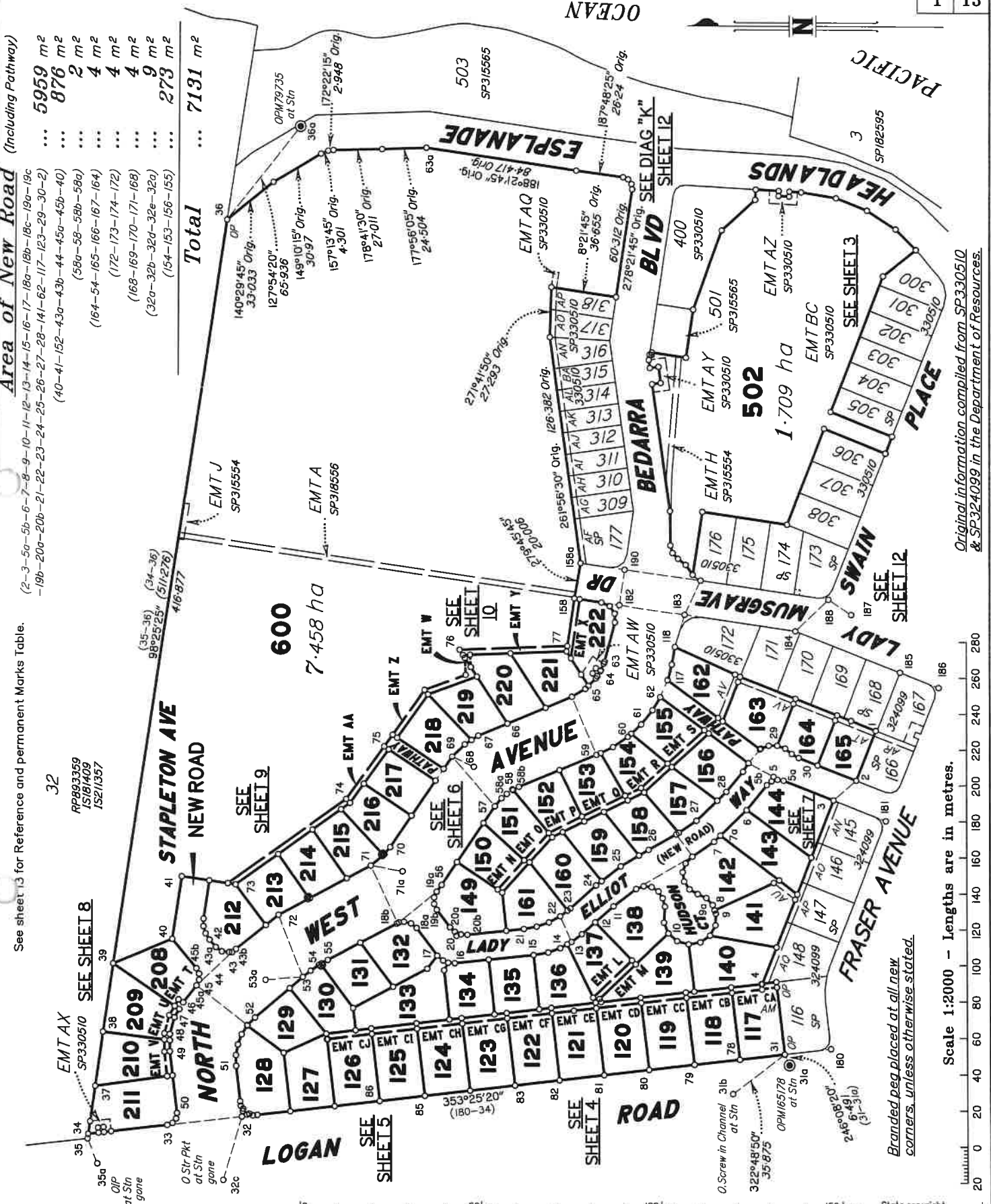
**Plan of Lots 117-144, 149-165, 208-222, 502 & 600 and Easements CA-CJ in Lots 117-126 respectively, Easement L in Lot 137, Easement M in Lot 139, Easements N-S in Lots 150-155 respectively, Easements T-V in Lots 208-210 respectively, Easement W in Lot 220, Easement X in Lot 222 and Easements Y, Z & AA in Lot 600**  
Cancelling Lot 600 on SP330510

LOCAL GOVERNMENT: BUNDABERG R.C. LOCALITY: INNES PARK

Meridian: MGA Zone 56 (vide SP330510)

Scale: 1:2000  
Format: STANDARD

Survey Records: No



Original information compiled from SP330510 & SP324099 in the Department of Resources.

Scale 1:2000 - Lengths are in metres.

**WARNING : Folded or Mutilated Plans will not be accepted.**  
Plans may be rolled.  
Information may not be placed in the outer margins.

(Dealing No.)

4. Lodged by

**MRH Lawyers**  
74 Woondooma Street  
Bundaberg QLD 4670  
info@mrh.com.au  
07 4154 5500

ELMRH

(Include address, phone number, email, reference, and Lodger Code)

Existing		Created		
Title Reference	Description	New Lots	Road	Secondary Interests
51297805	Lot 600 on SP330510	117-144, 149-165, 208-222, 502 & 600	New Rd	EMTs L-Z, AA, CA-CJ

**MORTGAGE ALLOCATIONS**

Mortgage	Lots Fully Encumbered	Lots Partially Encumbered
721154224	117-144, 149-165, 208-222, 502 & 600	

**ENCUMBRANCE EASEMENT ALLOCATIONS**

Easement	Lots to be Encumbered
719841705 (EMT H on SP315554)	502
719841709 (EMT J on SP315554)	600
720222981 (EMT A on SP318556)	600
721029321 (EMT AM on SP324099)	117 & 140
721029321 (EMT AT on SP324099)	165
721029321 (EMT AU on SP324099)	141
722044130 (EMT AW on SP330510)	222
722044130 (EMT AX on SP330510)	211
722044130 (EMT AY on SP330510)	502
722044130 (EMT AZ on SP330510)	502
722044132 (EMT AQ on SP330510)	600
722044132 (EMT AV on SP330510)	162-164
722044133 (EMT BC on SP330510)	502

Reinstatement Report

Plans in search: DP335909, SP330510, SP324099, IS35787, SP320214.

Reinstatement:

- All original corners were reinstated from original marks or dimensions agreeing with recently surveyed plans SP330510 & SP324099.
- Plan SP324099 provided connection to datum in accordance with CSR 3.28.1 subsequently, this plan is adequately connected to datum.

6. Building Format Plans only.

I certify that:

- \* As far as it is practical to determine, no part of the building shown on this plan encroaches onto adjoining lots or road.
- \* Part of the building shown on this plan encroaches onto adjoining \* lots and road

.....  
Cadastral Surveyor/Director\* Date  
\* delete words not required

7. Lodgement Fees :

Survey Deposit	\$ .....
Lodgement	\$ .....
.....New Titles	\$ .....
Photocopy	\$ .....
Postage	\$ .....
TOTAL	\$ .....

8. Insert Plan Number **SP341287**

117-144, 149-165, 208-222, 502 & 600

POR 22

Lots

Orig

2. Orig Grant Allocation :

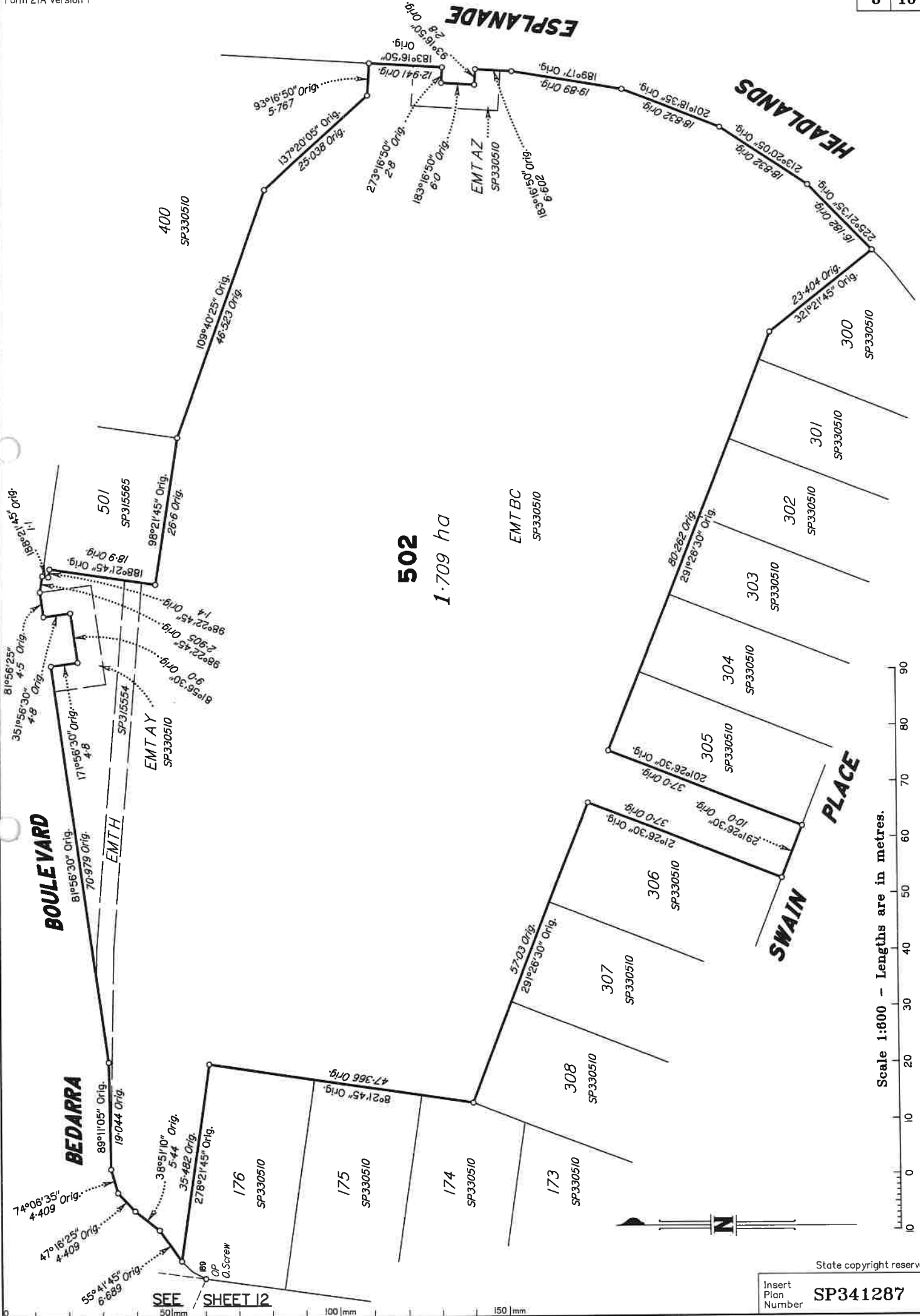
5. Passed & Endorsed :

3. References :

Dept File :  
Local Govt :  
Surveyor : **ML19-002-S01**

By : **Insite Planning and Surveying Pty Ltd**  
Date : **19/09/2023**  
Signed :  
Designation : **Delegate**

ADDITIONAL SHEET



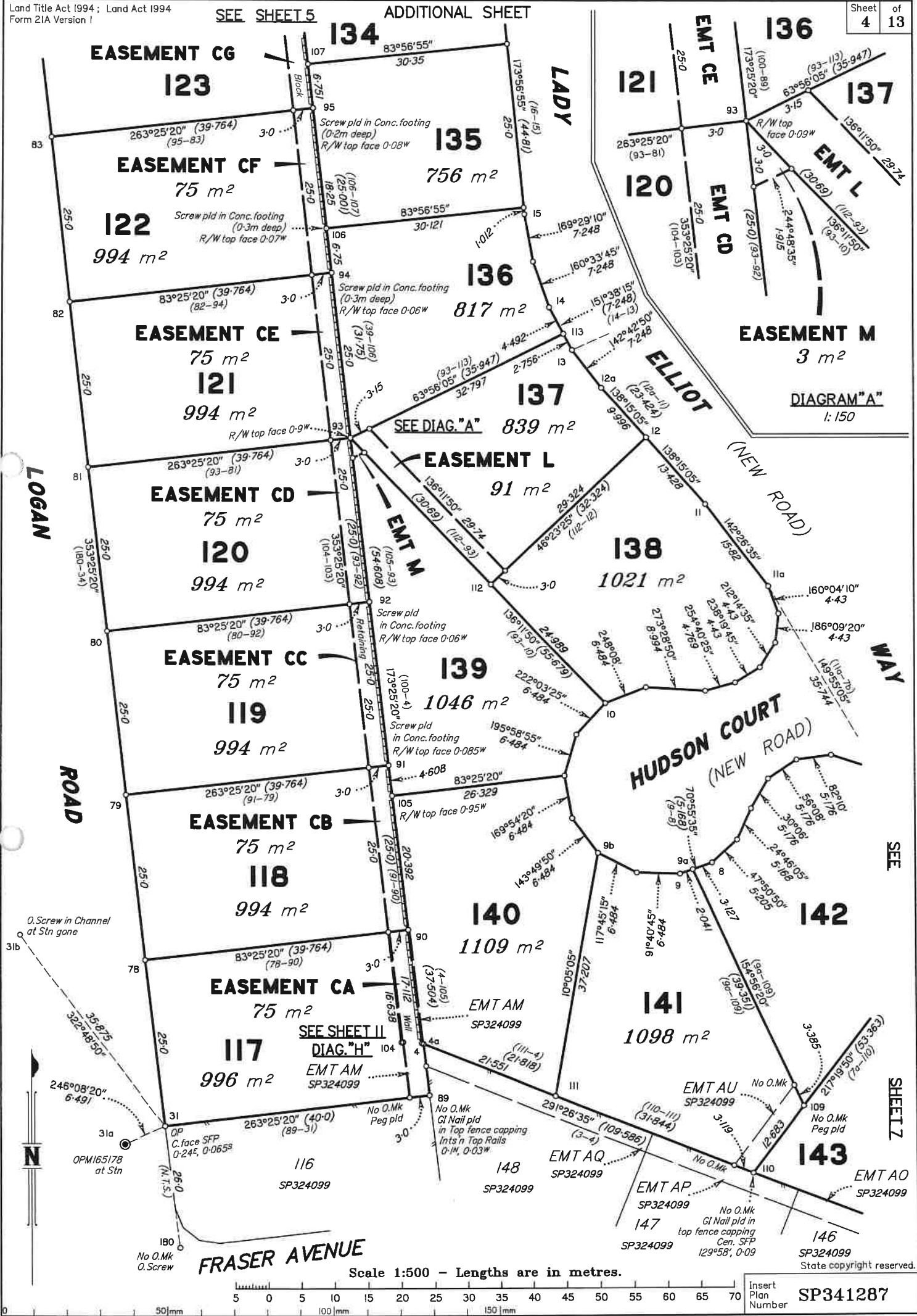


DIAGRAM "A"  
1:150



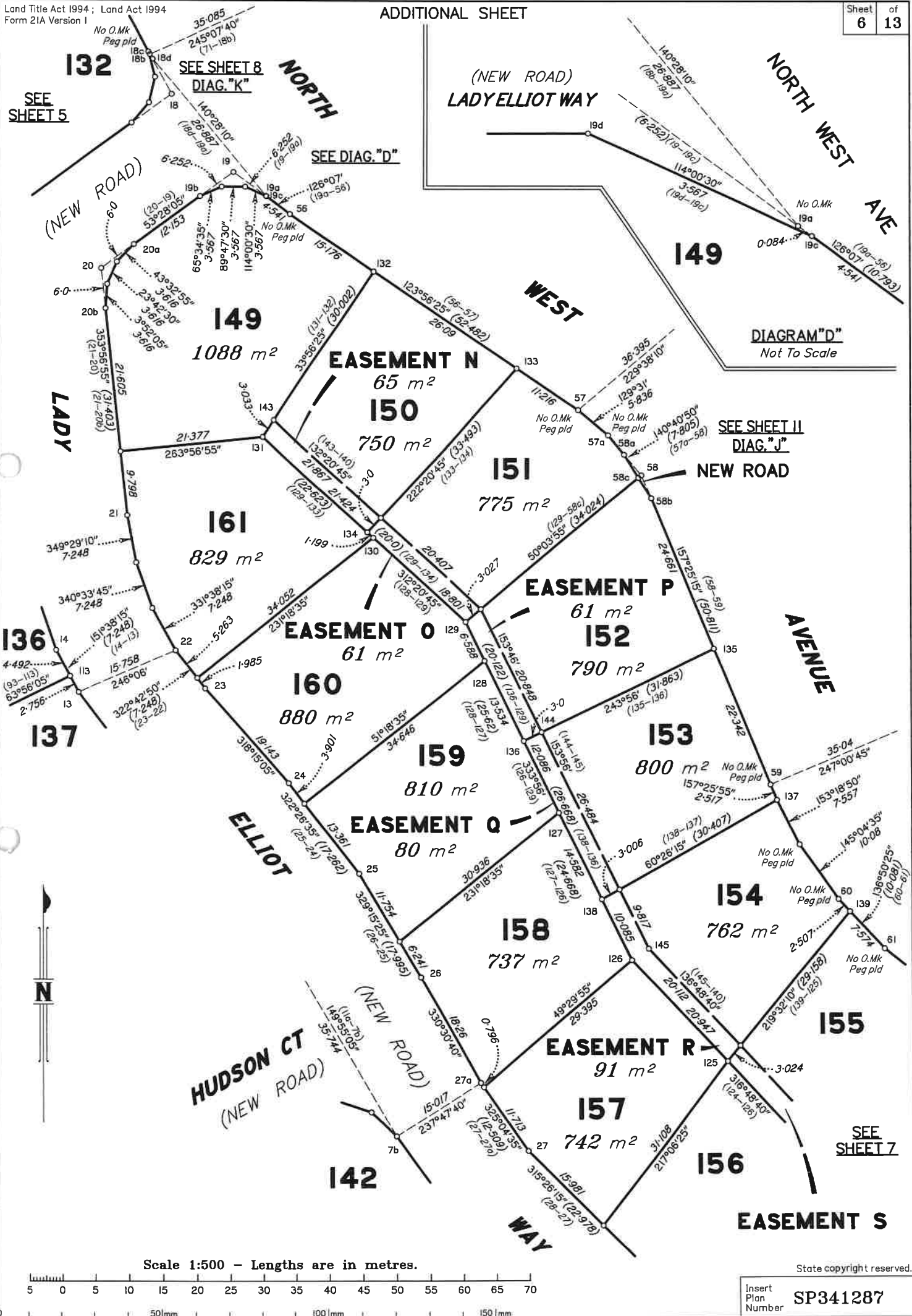
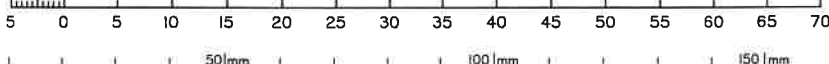


DIAGRAM "D"  
Not To Scale

SEE SHEET 11  
DIAG. "J"

SEE SHEET 7

Scale 1:500 - Lengths are in metres.



State copyright reserved.

Insert Plan Number SP341287



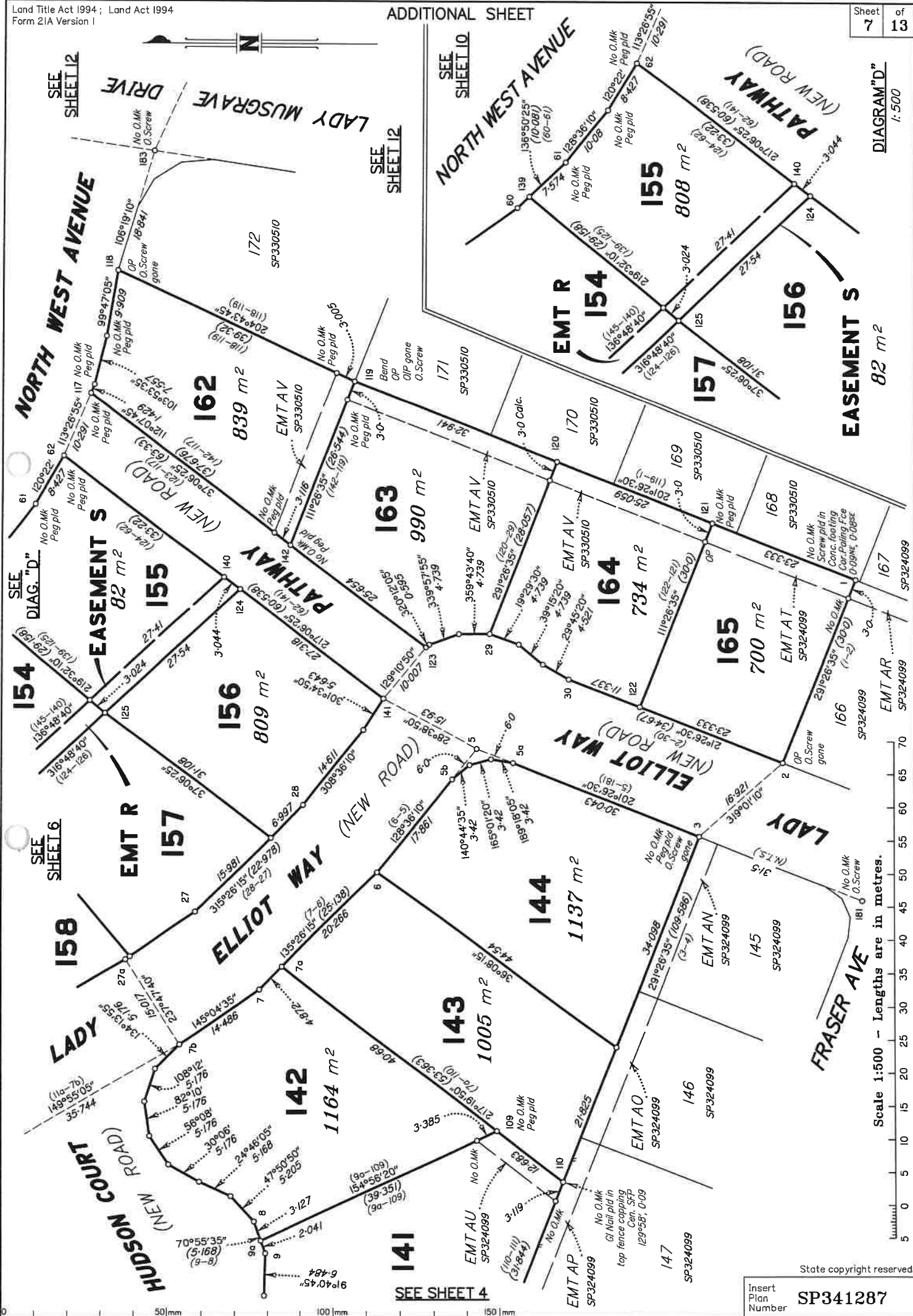


DIAGRAM "D"  
1:500

Scale 1:500 - Lengths are in metres.

Sheet copyright reserved.

Insert Plan Number SP341287

SEE SHEET 4

SEE SHEET 12

SEE SHEET 12

SEE SHEET 12

SEE SHEET 6

SEE SHEET 6

SEE SHEET 6

SEE SHEET 6

SEE SHEET 6





SEE SHEET 8

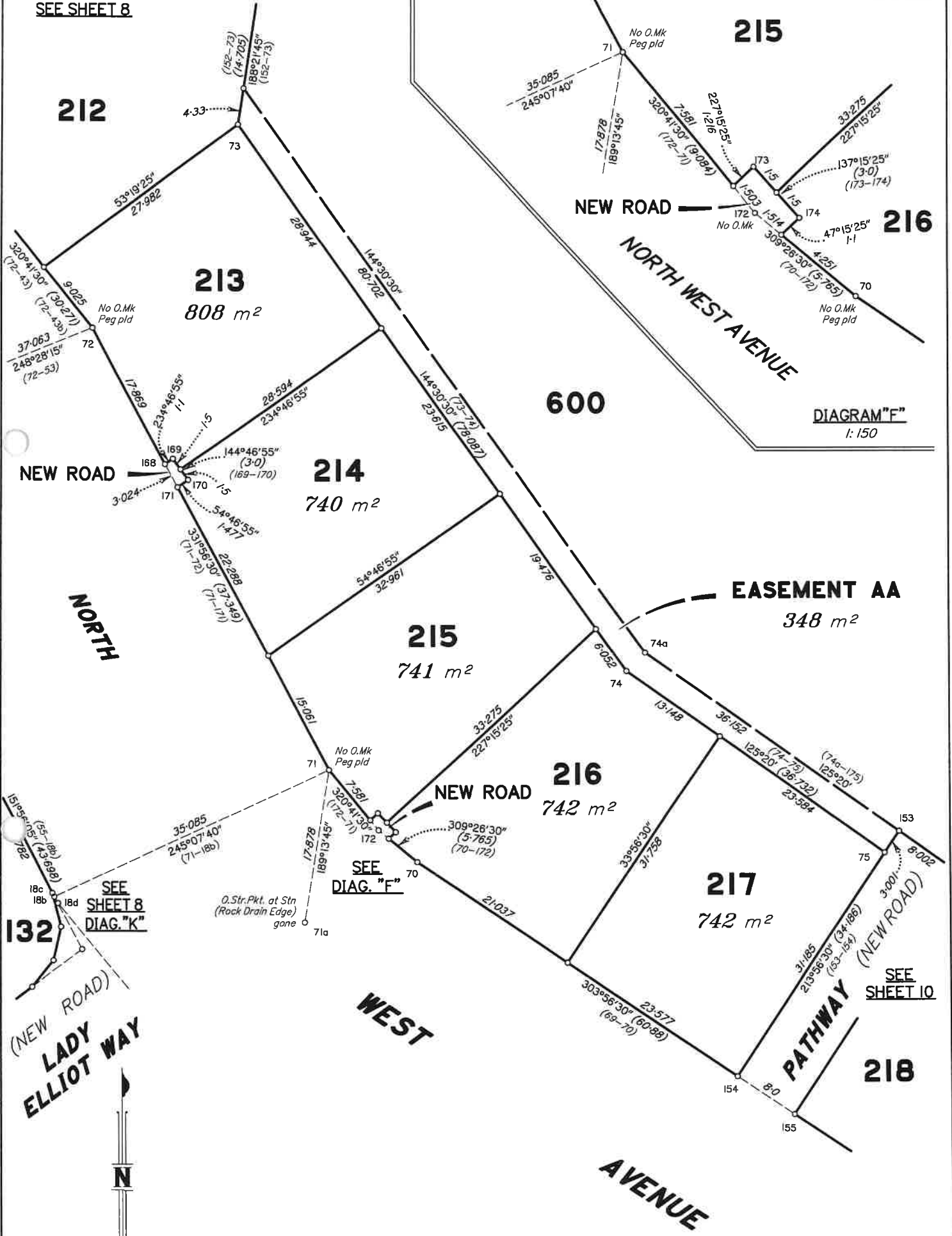


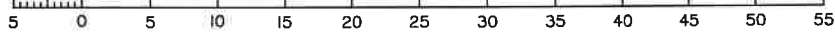
DIAGRAM "F"  
1:150

SEE SHEET 8  
DIAG. "K"

SEE  
DIAG. "F"

SEE  
SHEET 10

Scale 1:400 - Lengths are in metres.



State copyright reserved.

Insert Plan Number SP341287

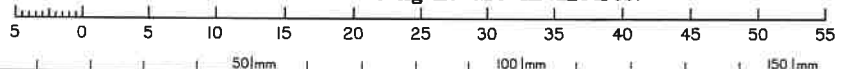
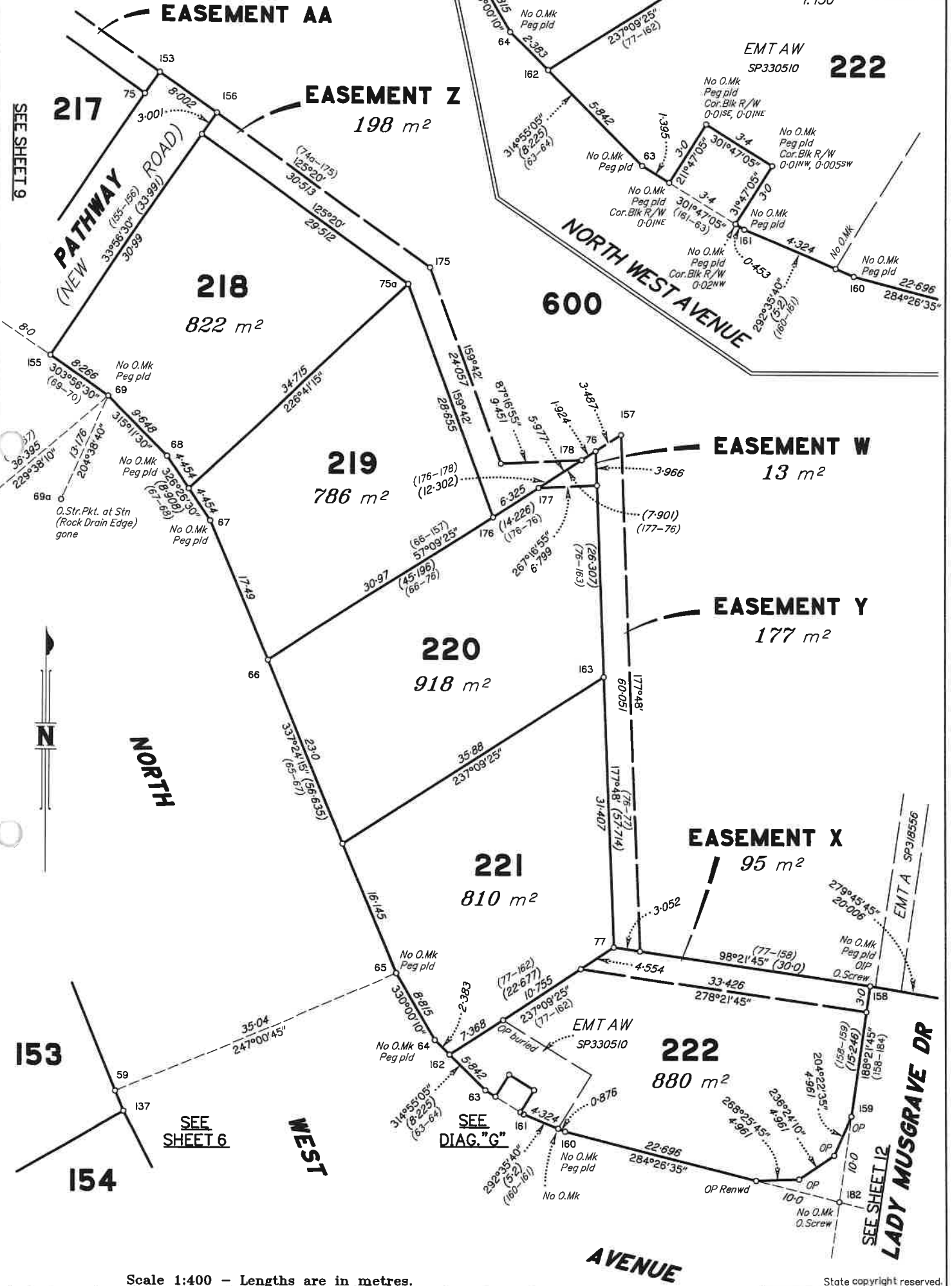


DIAGRAM "H"  
1:100

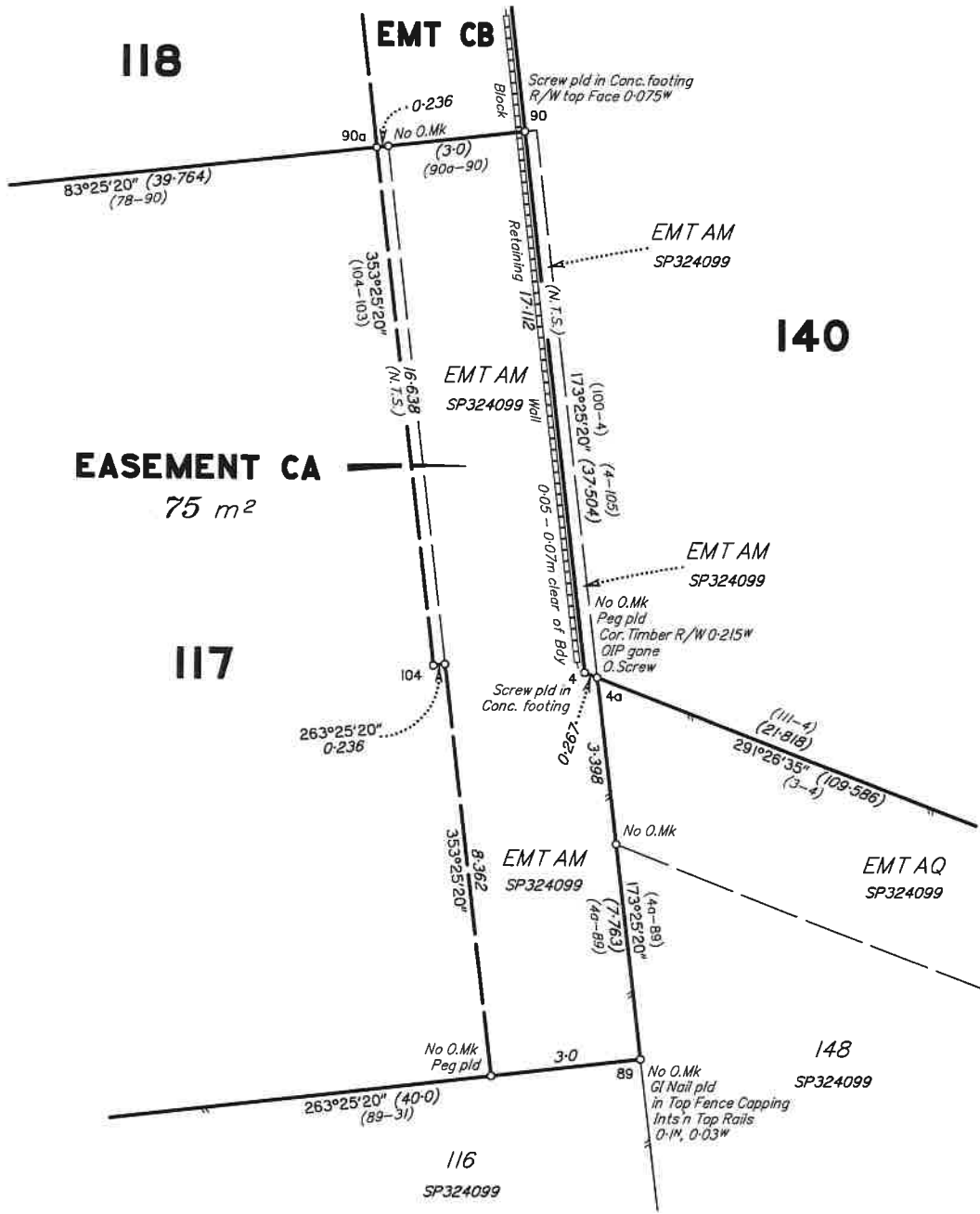


DIAGRAM "J"  
1:100

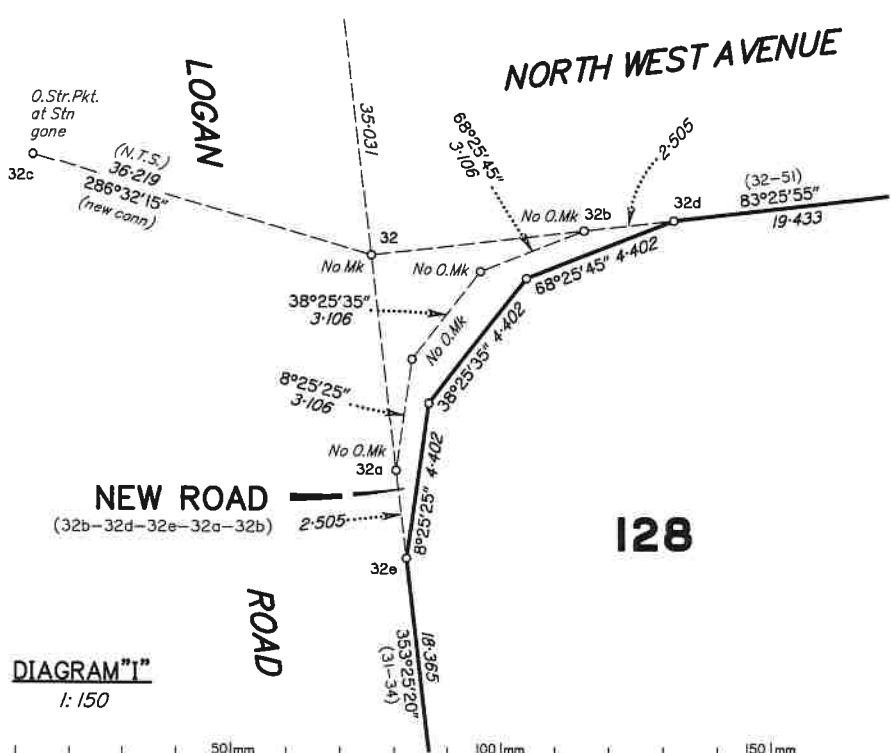
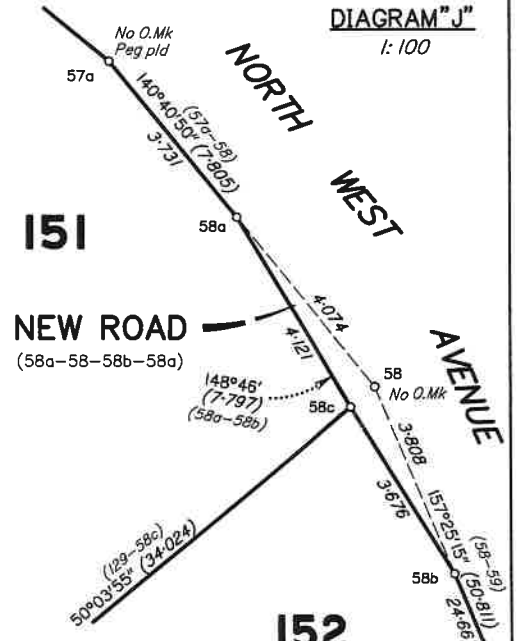
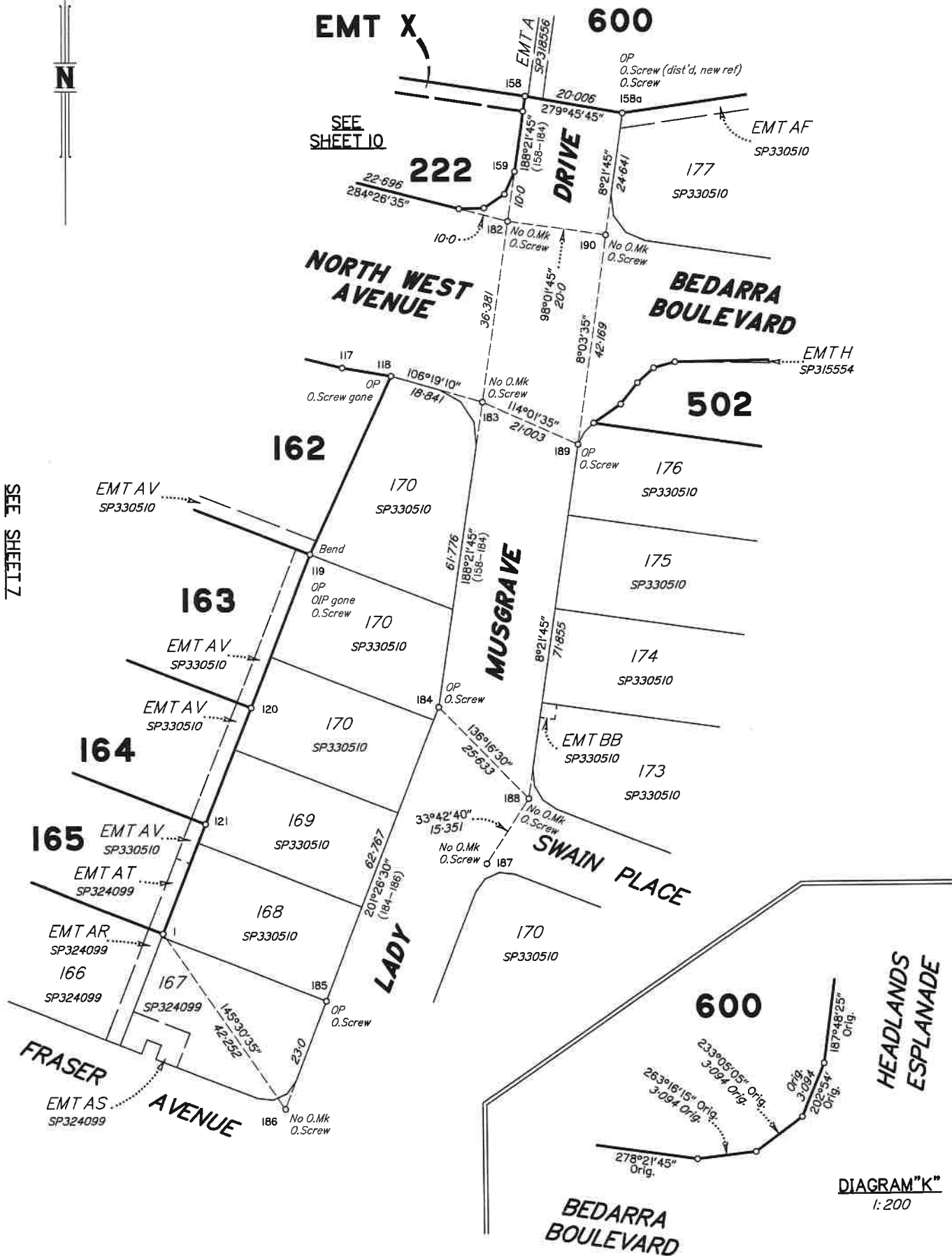


DIAGRAM "I"  
1:150

State copyright reserved.

Insert Plan Number **SP341287**

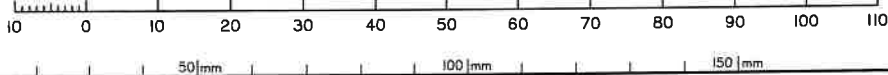


SEE SHEET 7

SEE SHEET 10

DIAGRAM "K"  
1:200

Scale 1:750 - Lengths are in metres.



State copyright reserved.

Insert Plan Number SP341287

REFERENCE MARKS

STN	TO	ORIGIN	BEARING	DIST
2	O.Screw in Channel gone	41/SP324099	352°21'	8-489
3	O.Screw in Channel gone	12/SP324099	112°43'	4-157
4a	O.Screw in M/H	10/SP324099	221°04'	1-777
4a	OIP gone	10/SP324099	278°23'	2-159
5	Screw in Kb		5°10'30"	2-829
7b	W Marker in Kb		323°19'	12-347
7b	Screw in Kb		305°06'	15-786
9b	Screw in Channel		38°25'30"	4-568
11a	Screw in Kb		115°22'	5-941
18	Screw in Pramway		134°32'	1-084
19	Screw in Pramway		325°34'	1-794
22	Screw in Channel		301°10'	9-055
26	Screw in Channel		234°21'	4-356
27a	Screw in Kb		195°21'	5-211
31b	O.Screw in Channel	6b/SP324099	at Station	
32	Screw in Conc.Path		199°58'	0-887
32	Pin		216°44'	5-604
32c	O.Str.Pkt. gone	20c/SP330510	at Station	
35	OIP	7/1535787	65°40'30"	0-992
35	O.Str.Pkt.gone	4a/SP320214	106°40'30"	8-194
35a	OIP gone	35a/SP330510	at Station	
40	Screw in Kb		139°10'30"	7-756
42a	Screw in Channel		295°14'45"	8-483
43	Screw in Pramway		185°25'	4-847
45	Screw in Pramway		249°52'	3-875
50a	Screw in SW Pit Surrounds		102°02'45"	11-203
50a	Screw in Pramway		328°13'30"	13-09
50b	Star Picket		at Station	
52a	Screw in Conc.Path		74°40'	3-391
53a	O.Str.Pkt. gone	17a/SP330510	at Station	
58c	Screw in Conc.Path		140°32'45"	10-145
61	Screw in Conc.Path		12°02'45"	2-653
63	Screw in Conc.Path		168°14'30"	3-095
69a	O.Str.Pkt. gone	40a/SP330510	at Station	
71	Screw in SW Pit Surrounds		276°01'30"	4-256
71a	O.Str.Pkt. gone	39a/SP330510	at Station	
73	Screw in M/H		46°09'30"	2-432
74	Screw in M/H		12°44'30"	2-506
74	Pin		351°27'	2-98
75	Screw in Conc.Path		82°31'	5-339
75a	Screw in M/H		353°23'	2-32
76	Screw in M/H		141°57'	2-818
76	Pin		151°41'	4-27
83	Screw in Channel		322°17'	12-885
83	Star Picket		256°33'45"	28-092
118	O.Screw in Conc.gone	13/SP330510	69°22'	7-317
119	OIP gone	28/SP330510	331°05'	0-94
119	O.Screw in M/H	28/SP330510	341°31'30"	2-631
124	Screw in Conc.Path		127°18'30"	5-122
131	Screw in M/H		80°40'	1-856
141	Screw in Pramway		182°09'45"	8-082
154	Screw in Conc.Path		141°05'	4-896
158	OIP	49/SP330510	68°02'	5-45
158	O.Screw in Pramway	49/SP330510	152°20'	8-91
158a	O.Screw in M/H (dist'd, new ref)	50/SP330510	150°57'30"	1-946
158a	O.Screw in Conc.Path	50/SP330510	261°46'	4-179
180	O.Screw in Channel	5/SP324099	255°14'30"	18-42
181	O.Screw in Channel	13/SP324099	227°19'	4-11
182	O.Screw in Path Edge	48/SP330510	263°41'	15-355
182	O.Screw in H/Wall	48/SP330510	232°02'45"	19-886
183	O.Screw in Island	12/SP330510	109°44'	9-855
184	O.Screw in Channel	11/SP330510	138°38'45"	6-013
185	O.Screw in Channel	47/SP324099	71°11'30"	7-363
186	O.Screw in Kb	46/SP324099	166°28'30"	2-907
187	O.Screw in Kb	6/SP330510	353°01'30"	1-357
188	O.Screw in Kb	77/SP330510	286°11'	5-013
189	O.Screw in Conc.Path	80/SP330510	10°37'	5-886
190	O.Screw in Island	51/SP330510	292°56'	9-866

PERMANENT MARKS

PM	ORIGIN	BEARING	DIST	NO	TYPE
31a-OPM	6a/SP324099		at Station	165178	Std.
36a-OPM	2a/SP315543		at Station	79735	Std.



# PLANNING BODY APPROVAL OF SURVEY PLAN

QUEENSLAND TITLES REGISTRY  
Land Title Act 1994 and Land Act 1994

FORM 18B Version 1  
Page 1 of 1

---

## 1. Survey Plan being approved

Survey Plan Number SP341287

Name of Planning Body Bundaberg Regional Council


---

## 2. Approval by Planning Body

Bundaberg Regional Council approves this plan in accordance with the:  
*Planning Act 2016*

**Bundaberg Regional Council**

10 / 10 / 2023  
Approval Date

  
.....  
Michael Ellery, Group Manager Development  
Authorised Delegate

Planning Body Reference Number : 533.2023.725.1

---

## 3. Planning Body Approval Exemption

Insert appropriate exemption clause and authorisation.

Not Applicable

### Privacy Statement

Collection of information from this form is authorised by legislation and is used to maintain publicly searchable records. For more information see the Department's website.